

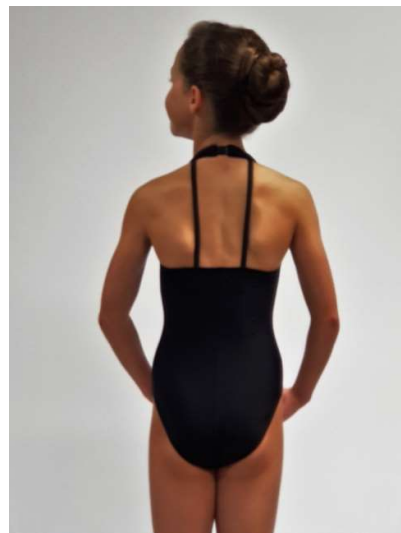


2020 CATALOGUE

LEOTARDS (ALL AGES)



**Halter Neck Leotard,
centre front seam.
Straight back with 2
vertical straps.**



**AVAILABLE IN 1 COLOUR
ONLY.**



CHARLI



**2020
(ALL AGES)**

LEOTARDS



Scoop neck leotard with v-shaped bust panel, two wide halter straps with clip at back of neck. Straight back with 2 diagonal gathered straps joining to neck strap.

Available in 1 colour and 2 colours.

CONTRAST IS SHOWN IN BLACK.

DYANA



2020

LEOTARDS (ALL AGES)



Gathered front leotard,
princess seams. 2 thin
binding straps crossing on
top of shoulder and forming
cross pattern at back.

Available in 1 colour
and 2 colours.

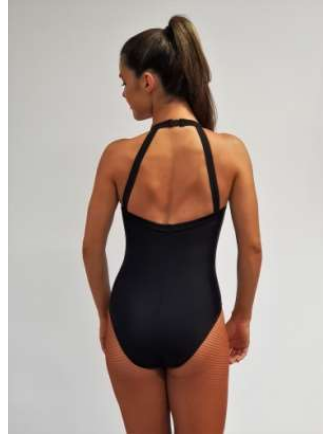
**CONTRAST IS SHOWN
IN TROPICO.**

HOPE



2020

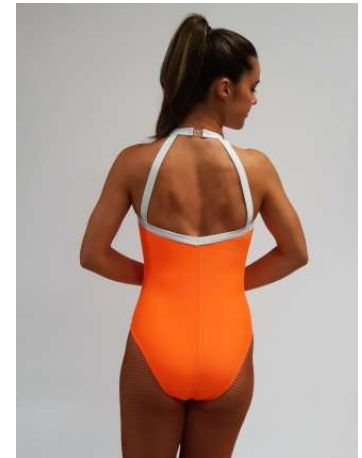
LEOTARDS (ALL AGES)



V-Neck leotard, gather at front, princess seams. Thick binding straps with clip at neck and thick binding trim. Soft V back with 2 diagonal thick binding straps.

Available in 1 colour and 2 colours.

CONTRAST IS SHOWN IN WHITE.



KRISTEN



2020

LEOTARDS (ALL AGES)



High scoop neck leotard
with horizontal seam at hip
level, front and back.
Circular keyhole back with
clip at neck.

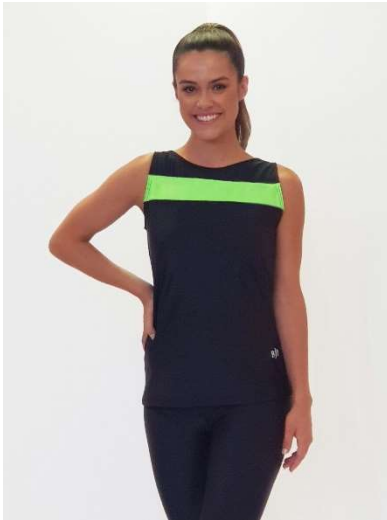
and 2 colours.

MAIN IS THE BOTTOM OF
THE LEOTARD
CONTRAST IS THE TOP
OF THE LEOTARD.

WILLOW



2020 PERFORMANCE WEAR (13-15 YRS, SENIORS, LADIES ONLY)



Hip length boat neck singlet
with scoop back.
Contrast horizontal stripe
across chest.



Available in 1 colour
and 2 colours.

**CONTRAST IS SHOWN
IN BLACK, ACID LIME
& BLACK FOILE MESH.**

Also available with $\frac{3}{4}$
Sleeve, either in
plain polyester,
black foile mesh or
black or white
honeycomb mesh.

NOTE: Lycra Sleeves
must be the same
colour as the main
colour.

If ordering MESH
sleeves AND a mesh
contrast stripe they
must be the same

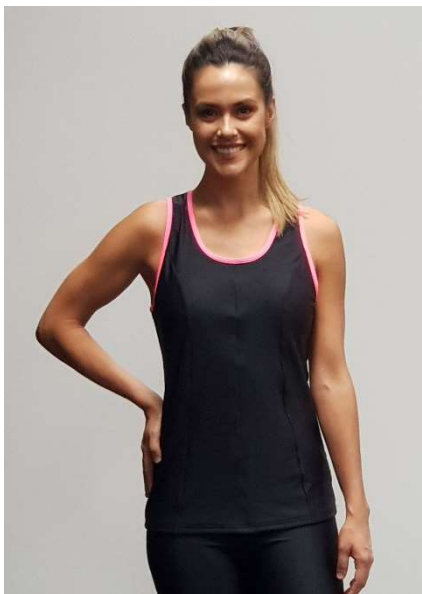
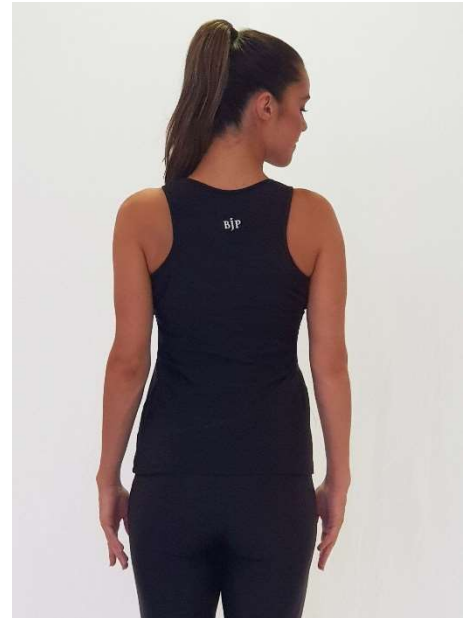
AURORA



**2020 PERFORMANCE WEAR
(13-15 YRS, SENIORS,
LADIES ONLY)**

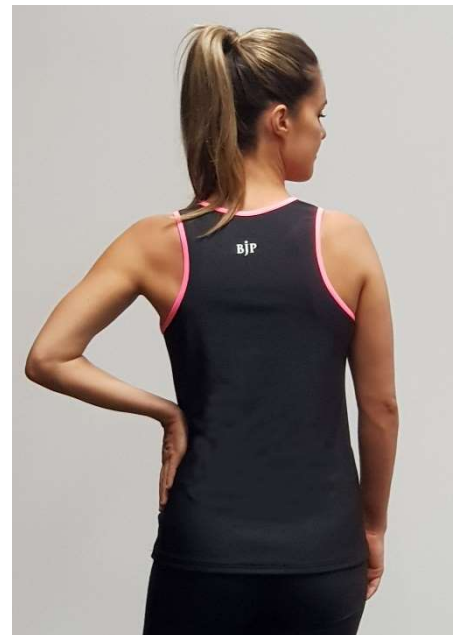


**Hip length racer-back
singlet. Centre front
and princess seams.
Contrast binding
around neck and
armhole.**



**Available in 1
colour and 2
colours.

CONTRAST IS
SHOWN IN BLACK.**



AVIVA

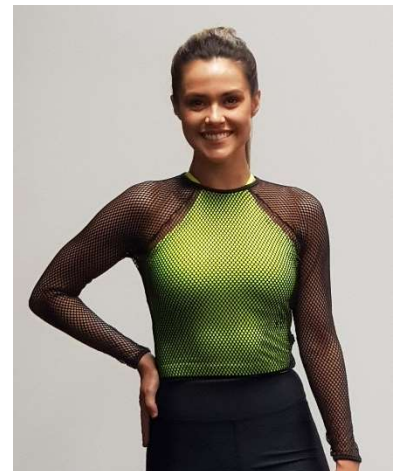
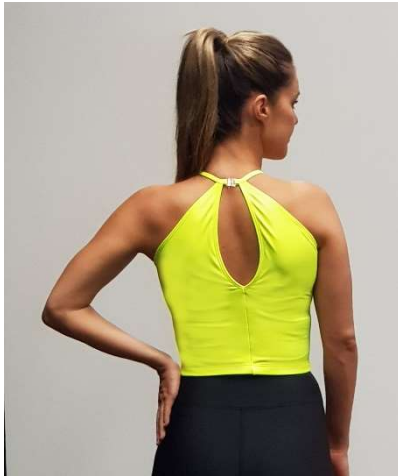
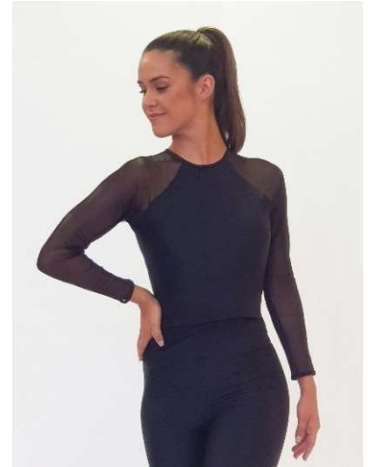


2020 PERFORMANCE WEAR (13-15 YRS, SENIORS, LADIES ONLY)



Fitted waist length cutaway top, slit back with clip at neck, binding around top of neck.

Available in 1
colour only for no
sleeve



Also available with long Sleeve, either in lycra, Black foile mesh or Black or White Honeycomb Mesh.

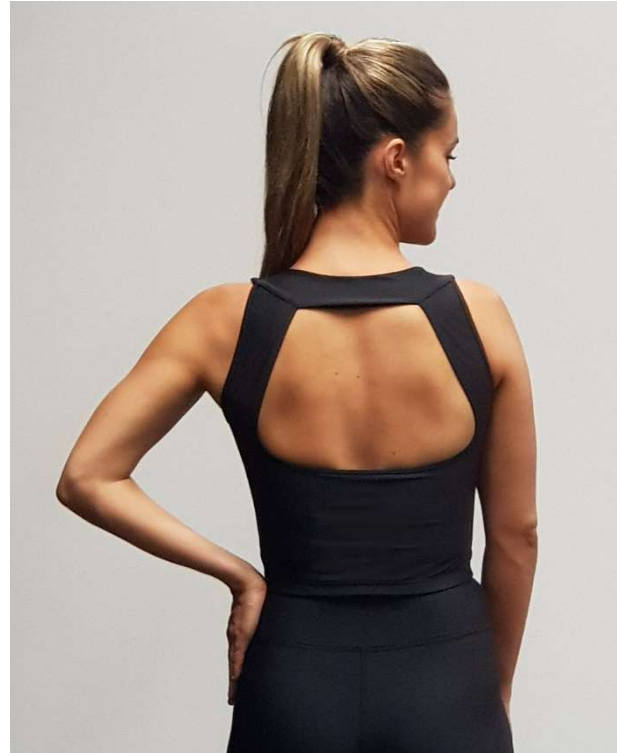
MESH SLEEVE CAN BE IN A DIFFERENT COLOUR TO THE MAIN COLOUR.

ALSO AVAILABLE IN FULL MESH TO WEAR OVER SOLID COLOUR DANSE TOP OR UNDERCROP

DANSE



**2020 PERFORMANCE WEAR
(13-15 YRS, SENIORS,
LADIES ONLY)**



Fitted waist length top. Thick double layered collar, front and back. Fine stretch mesh sweetheart insert (not foile or honeycomb mesh). Wide square shaped back.

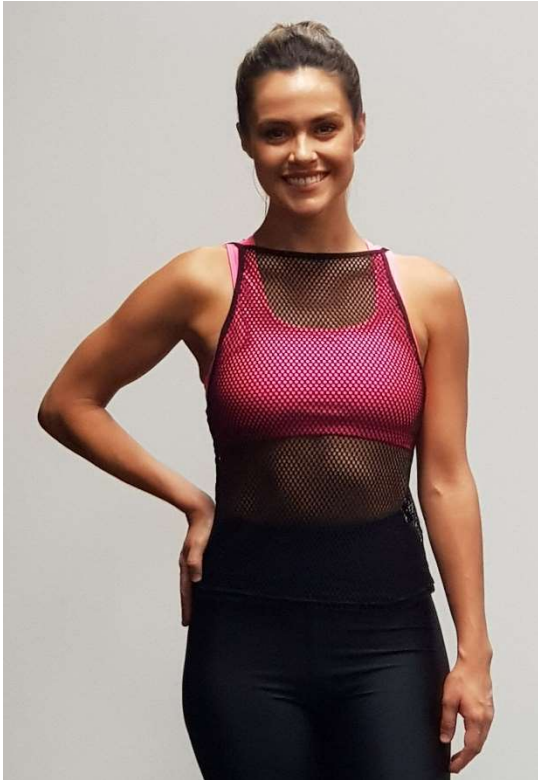
Available in 1 and 2 colour.

Contrast is mesh insert.

FLAIR



**2020 PERFORMANCE WEAR
(13-15 YRS, SENIORS,
LADIES ONLY)**



Hip length mesh singlet. High neck at front with scoop back. Thin binding straps plus binding around neck and scoop back.

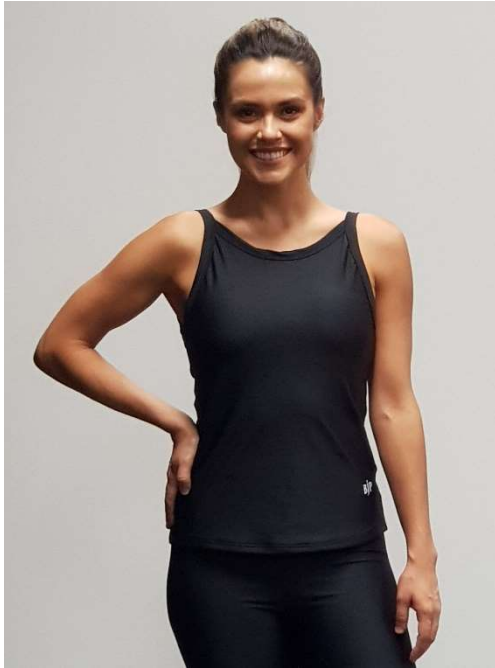


Available in Black Foile Mesh, Black Honeycomb Mesh and White Honeycomb Mesh

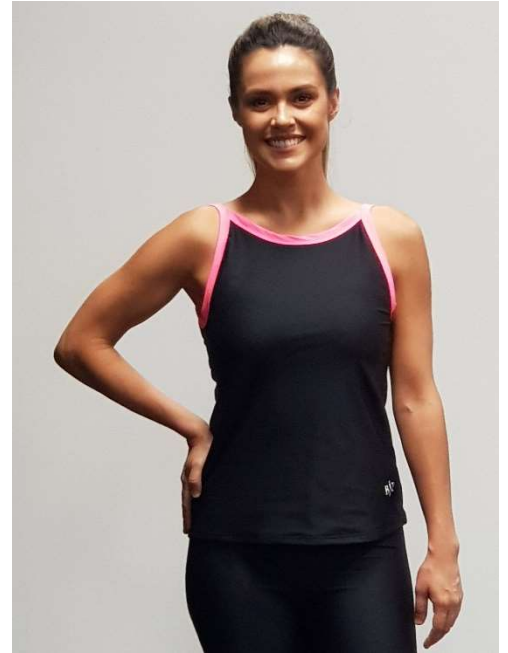
FLAUT



2020 PERFORMANCE WEAR (13-15 YRS, SENIORS, LADIES ONLY)

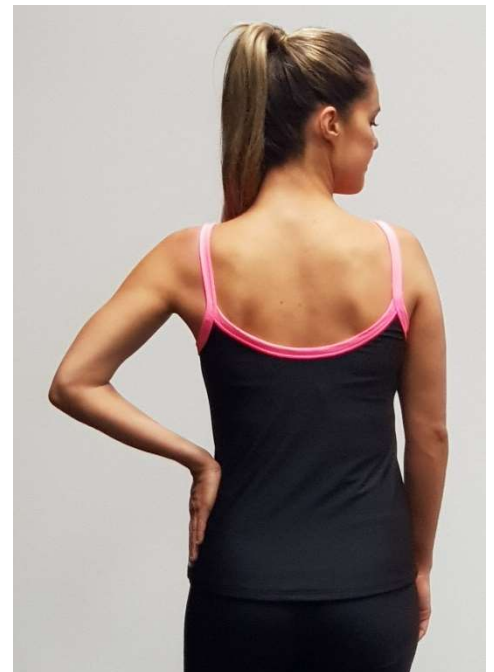
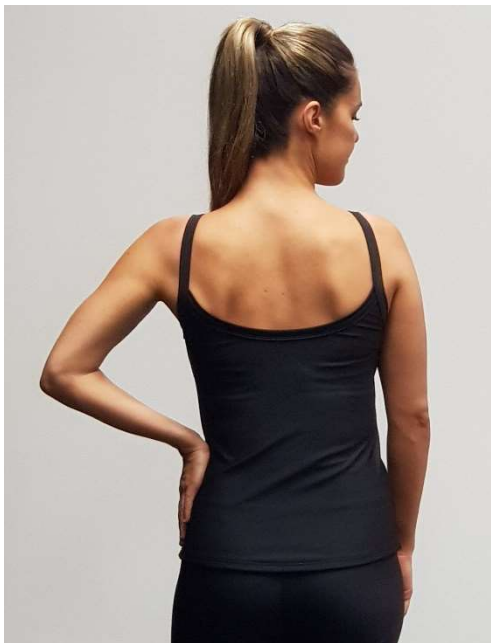


Hip length top. High neck at front with scoop back. Thick binding straps plus binding around neck and scoop back.



Available in 1 and 2 colour.

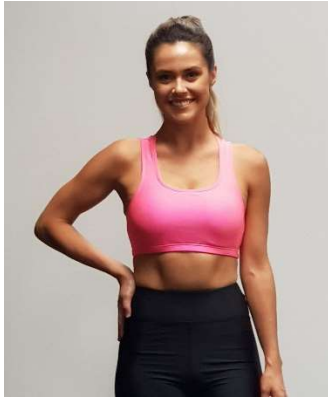
Contrast is shown in Knock Out Pink.



VERVE



2020 PERFORMANCE WEAR (13-15 YRS, SENIORS, LADIES ONLY)

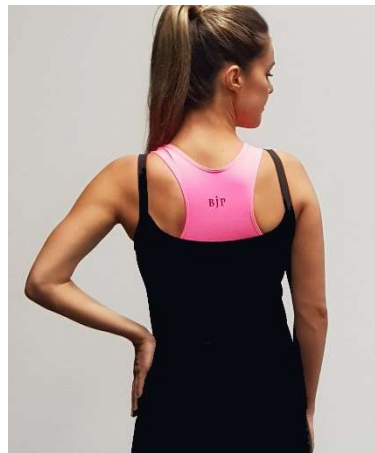
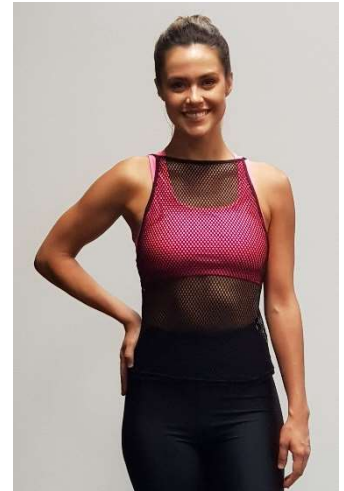
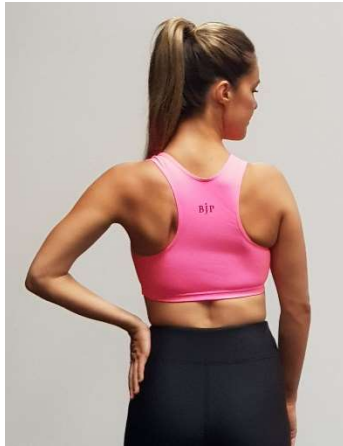
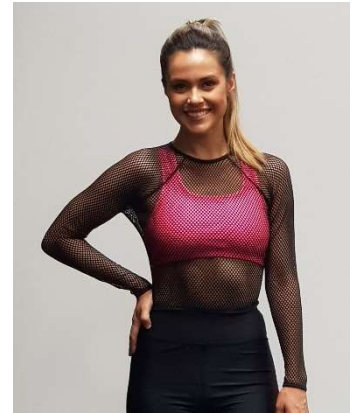


Racer back crop top.
Front lining
designed to insert
your own bra cups.

**THIS TOP MUST BE
WORN
UNDERNEATH A
MESH TOP OR
OTHER SOLID TOP
FOR
COMPETITIONS.**

**IT CANNOT BE WORN
ON ITS OWN**

**Available in 1
colour only.**



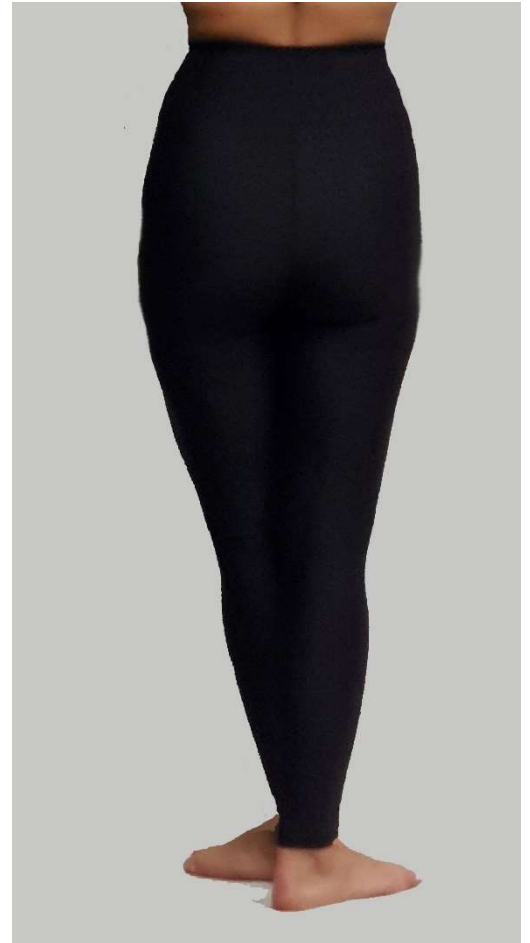
UNDERCROP



**2020 PERFORMANCE WEAR
(13-15 YRS, SENIORS,
LADIES ONLY)**



High waist
leggings,
double yoke
band, triangle
gusset.
Seam on
inside leg.
Flat lock
stitching.



Available in 2 Lengths:

ANKLE LENGTH (shown here)

7/8 LENGTH

(9cm shorter than ankle length)

Available in 1 colour only.

SASS



**2020 PERFORMANCE WEAR
(13-15 YRS, SENIORS,
LADIES ONLY)**



High waist
leggings,
double yoke
band, triangle
gusset. Flat
lock seams.
Curved seam
at back,
forming side
seam on
outside of leg.



Available in 2 Lengths:

ANKLE LENGTH (shown here)

7/8 LENGTH

(9cm shorter than ankle length)

Available in 1 colour only.

STRUT